

READY TO MOVE



ROSELAND
DEVELOPERS

A Family-Friendly Neighborhood With **Seamless Connectivity**

Spacious **3 BHK** luxury floors blending privacy,
design, and modern comfort seamlessly.

BOOK NOW



A - 201



Limited Floors
AVAILABLE

roselanddevelopers.com

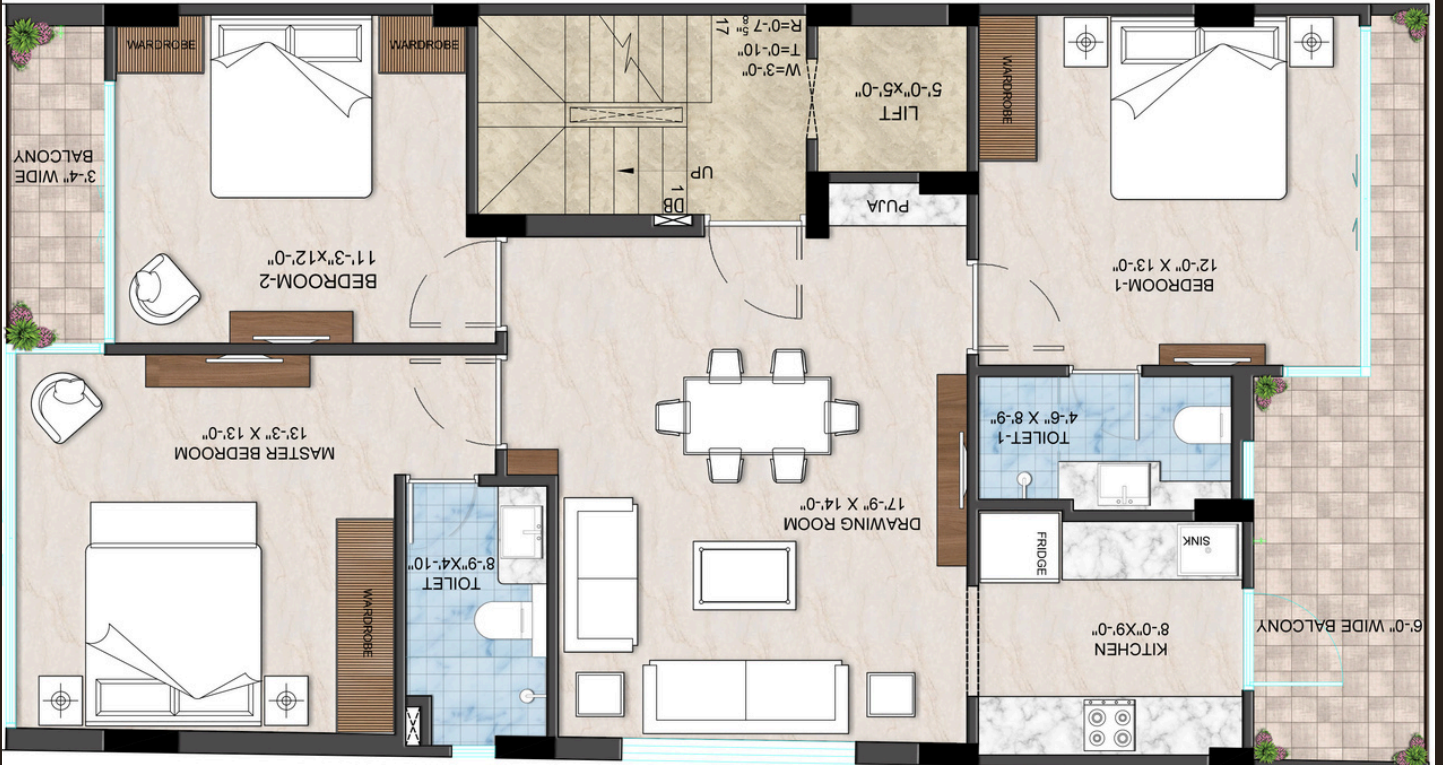
A-201, BPTP Astaire Garden,
SPR Rd, Sector 70A, Gurugram



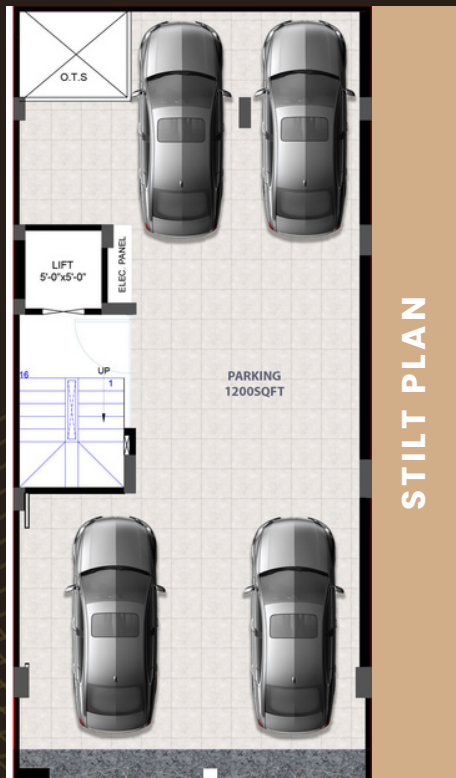
ROSELAND
DEVELOPERS

PLOT NO. A-201

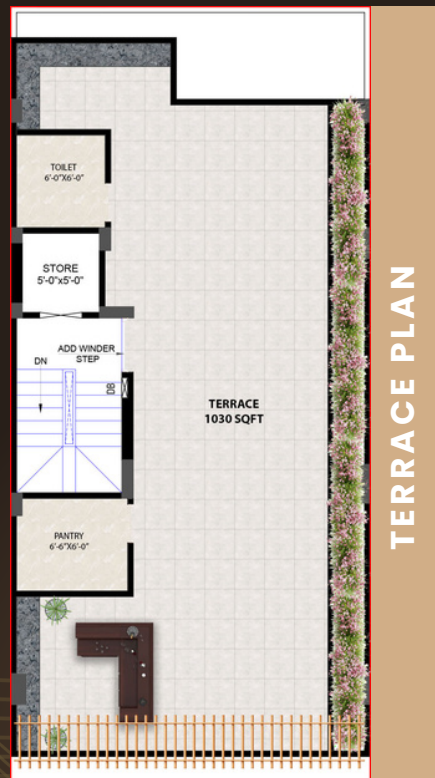
3BHK+2T 3 SIDE OPEN &
150 SQYD PARK FACING



FLOOR PLAN



STILT PLAN



TERRACE PLAN



PROPERTY SPECIFICATIONS

- ✓ 3 Bedrooms
- ✓ Private Terrace
- ✓ Full Basement Right
- ✓ Elevator
- ✓ Modern Kitchen
- ✓ Private Parking
- ✓ Premium Fittings
- ✓ Seepage Warranty
- ✓ Premium Interiors
- ✓ Exterior Waterproof Paint
- ✓ Entire Floor Waterproofing
- ✓ 5yrs. Anti-Termite Treatment Warranty

Private Terrace – Full Roof Rights, Pergola, Bar Counter, Pantry, Washroom, Sitting Area

Basement– Full Basement Rights, Modular Pantry, Fully Loaded Washroom, Store Room.

AMENITIES



Yoga & Gym



Butterfly Garden



24X7 Security



Club House



24X7 Water Supply



Kids Play Area



Lift, Lobby



3 Acres Park



CCTV Camera



Parking



Pool Table



1 Years Maintenance



Restaurant



Banquet Hall



Theater



Heated Pool



Swimming Pool



Steam & Spa



Jacuzzi



Indoor Library



ROSELAND
DEVELOPERS

LOCATION ADVANTAGES

BPTP GreenOaks

Private Living, Paerfectly Connected

Peaceful sanctuary with seamless access to retail, education, hotels & corporate hubs.



HOSPITALS & CLINICS

- ANANTA HOSPITAL
- PARK HOSPITAL
- CLOUD NINE
- MEDANTA
- FORTIS
- MAX HOSPITAL

EDUCATIONAL INSTITUTES

- ST. ANGELS
- INDUS WORLD SCHOOL
- KUNSKAPSSKOLAN INTERNATIONAL
- SURAJ SCHOOL
- ST. XAVIER'S
- SD ADARSH VIDYALAYA
- DPS
- SUNCITY SCHOOL
- SHIV NADAR

HOTELS

- RADISSON
- COUNTRY INN

OFFICES & BUSINESS PARKS

- AIR INDIA
- INTELLION EDGE
- CORPORATE GREENS
- PALAZZO
- BUSINESS PARK
- MEGAPOLIS
- TRADE CENTRE
- AMEX CORPORATE OFFICE
- CYBER CITY

RETAIL

- D'MART
- CITY CENTRE
- GOOD EARTH CITY CENTER
- CELEBRATION MALL
- ELAN EPIC